

City of Lake Worth's

Christmas Tree Lighting Celebration

Friday, December 2nd
5:00 - 7:00 PM
7005 Charbonneau

CITY OF LAKE WORTH

November - December 2022

City Calendar

Council meets the 3rd Tuesday of each month at 6:30pm.

Planning & Zoning meets the 2nd Tuesday of each month at 5:30pm. As needed.

Board of Adjustment meets the 1st Tuesday of each month at 6:30pm. As needed.

Bulk pick-up

- Nov 21-25
- Dec 27-30 

City Holidays

- ◆ Nov 24-25
- ◆ Dec 23 & 26

| Inside this issue: | |
|---------------------------|-----|
| Senior Center | 2 |
| Library | 3 |
| Community Info. | 4-5 |
| City Secretary | 5 |
| Municipal Court | 6 |
| Utility Billing | 6-8 |
| Phone List | 8 |



L.O. Bud Irby
Lake Worth Senior Center
November/December Activities
7005 Charbonneau Lake Worth, TX 76135
(817) 237-3281 | lakeworthtx.org

English Cottage Gardens

- Texas Style!

November 17th

9:00 AM



Learn how to create your very own Texas Style English Cottage Garden!
Presented by the Lake Worth Garden Club.

Holiday Cooking Demo

December 9th | 12:15 PM



Watch a live cooking demo and sample the delicious results!

Sponsored by Care N' Care.

Senior Thanksgiving

Luncheon

November 23rd | 11 AM - 1 PM

Enjoy a FREE catered Thanksgiving Lunch and live music at

National Hall on Robert's Cut Off!

Hosted by the City of Lake Worth.



Senior Christmas Party

December 16th | 5:00 PM

Celebrate the holiday season with our first annual Senior Christmas Party!

Live music, food, and a gift exchange.



Senior Self-Defense Dates:

November 29th —12:30 PM

December 27th—12:30 PM



All program space is limited.
Please RSVP by contacting the center.

MARY LOU REDDICK PUBLIC LIBRARY

7005 CHARBONNEAU | 817-237-9681
lakeworthtx.org/library

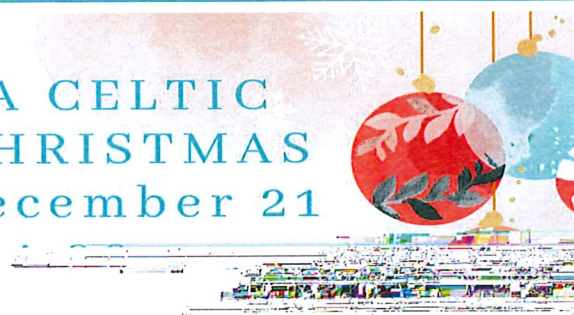


Thursdays at 3:30 PM

Join us for a different craft each week!

- November 3 —Paper Flamingo
- November 10 —Gratitude Tree
- November 17 —Turkey Headbands
- December 1 —Mini Christmas Trees
- December 8 —Holiday Ornaments
- December 15 — Christmas Cookies
- December 22 — No Program

A CELTIC CHRISTMAS December 21



Join us for this free family program featuring live music, stories & refreshments in celebration of Christmas.

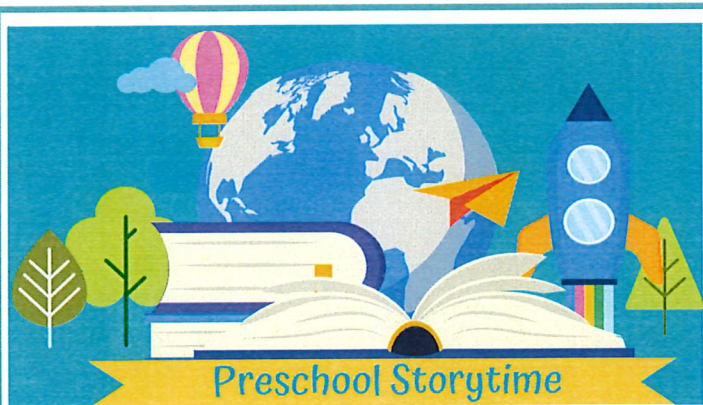
Free Computer Classes

Tuesday, November 8 at 1:00 pm
WORD BASICS

Friday, November 11 at 1:00 pm
POWERPOINT BASICS

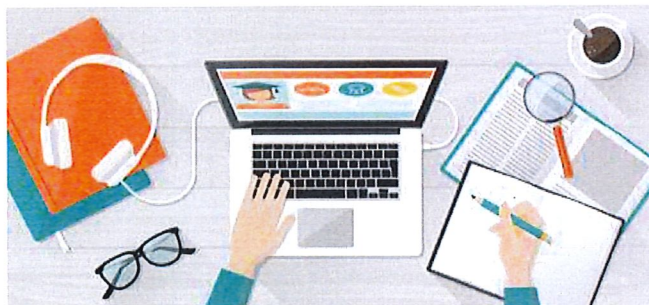
Friday, November 18 at 1:00 pm
EXCEL BASICS

Classes taught by Goodwill. Call the library to register: 817-237-9681



Wednesdays at 10:30 AM

Join us every week for stories, songs & a craft! Especially for children under 6.



The City of Lake Worth's Annual

SENIOR THANKSGIVING LUNCHEON

Food ~ Fellowship ~ Live Music



NOVEMBER 23RD

11:00 AM - 1:00 PM

at National Hall

**3316 ROBERTS CUT OFF
LAKE WORTH, TX 76114**

Thank you to our sponsors:
Albertson's, Chick-fil-A & Care N' Care



**JOIN A BOARD OR COMMISSION
SERVE THE CITY YOU LOVE**



The City Secretary's Office receives applications from citizens interested in contributing to their community by volunteering to serve on a board or commission. The various boards and commissions act as an advisory board to the Council.

Appointments to boards and commissions are made annually. Places 1, 3, 5, 7 expire in odd number years and Places 2, 4, 6 expire in even numbered years unless otherwise noted by ordinance.

If you are interested in being part of our team, please complete an application and return it to the City Secretary's Office at 3805 Adam Grubb, Lake Worth, Texas 76135. You may also fax your application to 817-237-9684 or send via e-mail at citysecretary@lakeworthtx.org. Applications can be found on city's website www.lakeworthtx.org under How to do I apply for Boards and Commission. Applications are forwarded to City Council for consideration of appointment as vacancies occur during the year. All applications are kept on file for one year from the date of receipt. Residents are appointed by the City Council to serve on the following boards and commissions:

- Animal Shelter Advisory Committee
- Board of Adjustment
- Planning and Zoning Commission

For additional information, please contact the City Secretary's Office at 817-237-1211 extension 105 or via e-mail at citysecretary@lakeworthtx.org.

This year the Lake Worth Municipal Court is pleased to join municipal courts, city councils, and communities throughout Texas in showing appreciation for the dedicated municipal judges, court clerks, court administrators, prosecutors, bailiffs, and warrant officers who comprise the Texas municipal courts from November 7-11, 2022.

The yearly celebration of Municipal Courts Week, set for Nov. 7 - 11, will include a month-long collection of canned and non-perishable food or hygiene products to benefit the blessing boxes in our community and Community Link. Our goal is to stock the blessing boxes and fill Christmas boxes for Community Link to distribute to families during the holidays.

Donations can be dropped off in the distinctive collection box which will be placed in the main City Hall lobby, Senior Center, and Library.

What's Popping?

Free Popcorn on Friday November 11th in the main City Hall lobby from 10:00a-3:00p. Come meet the City Marshal and court staff because you make us POP!



The poster features the City of Lake Worth logo and the text 'MUNICIPAL COURT' with a scale of justice icon. Below this is a large, stylized banner that reads 'FOOD DRIVE'. The main text of the poster is centered and reads: 'Please help us collect non-perishable items to benefit the blessing boxes (Rayl and Hodgkins Park) and Community Link. This food drive will serve many families in need within our community.' Below this is the heading 'DROP-OFF LOCATIONS:' followed by two locations: 'CITY HALL LOBBY: 3805 ADAM GRUBB' and 'SENIOR CENTER/LIBRARY: 7005 CHARBONNEAU'. A list of items to donate is provided in two columns. At the bottom of the poster is an illustration of various food and hygiene items including cereal, beans, soup, corn, and tuna. The date 'NON-PERISHABLE ITEMS ONLY NOVEMBER 1-30' is printed at the very bottom.

City of LAKE WORTH | **MUNICIPAL COURT**

FOOD DRIVE

Please help us collect non-perishable items to benefit the blessing boxes (Rayl and Hodgkins Park) and Community Link. This food drive will serve many families in need within our community.

DROP-OFF LOCATIONS:

CITY HALL LOBBY: 3805 ADAM GRUBB
SENIOR CENTER/LIBRARY:
7005 CHARBONNEAU

- STUFFING
- MASHED POTATOES
- MAC N CHEESE
- CANNED CORN
- CAN GREEN BEANS
- CORNBREAD MIX
- CANNED YAMS
- BOX OF HOT CHOCOLATE
- GRAVY/GRAVY MIX
- BAG OF MARSHMALLOWS
- CHICKEN BROTH
- PIE FILLING
- CRANBERRY SAUCE
- GRAHAM CRAKERS
- BAG OF CANDY (FOR STOCKINGS)

NON-PERISHABLE ITEMS ONLY NOVEMBER 1-30

Low Income Household Water Assistance Program

The City of Lake Worth has partnered with the City of Fort Worth Community Action Partners to provide a water assistance program to economically disadvantaged families, disabled and elderly individuals.

For eligibility requirements and to apply, applicants need to complete an application online or by mail. You may apply online at www.fortworthtexas.gov or pick up a paper application from our Utility Billing Clerk in the office. An intake specialist will contact you once your application is received. If you need to check the status of your application or a follow up question,

- call 817-392-5795 (mailed application)
- call 817-392-2276 (online application)
- email CAPonline@FortWorthTexas.gov

Please note you are responsible for paying your bill until your application is processed and you are notified by a caseworker.

Approved payments are provided directly to the City of Lake Worth.

EMPLOYMENT OPPORTUNITIES

Maintenance Worker I-Water \$15.87-\$21.42 per hour

Telecommunicator \$20.15-\$27.50 per hour

Street Maintenance Worker I \$15.87-\$21.42 per hour

Police Sergeant \$38.46-\$48.08 per hour

Winter Sewer Averaging Fact Sheet



What is Winter Sewer Averaging?

Winter months are used to calculate the sewer average by adding the three months of water consumption and dividing by 3. This will be the consumption used for your new sewer average.



Why does the city use Winter Sewer Averaging to determine my sewer bill?

Your water meter measures your monthly water use, but there is no meter on your sewer line. Using an average for sewer charges stabilizes the costs and allows resident to directly control their sewer average.



When does Winter Sewer Average happen?

Your sewer charges will be calculated using the water consumption from the billing cycles starting November 8, 2022 through February 7, 2023.



When will my new sewer average appear on my utility bill?

Residential customers can expect to see their new sewer average on their April 2023 billing.



Do all residents have their sewer averaged?

Only established residential customers are eligible for sewer averaging. New residents will not be eligible until the next year's averaging, as the process requires three full months of water consumption data. New residents will be charged the city average for sewer until they complete an averaging period in the property.



Why are those months used to determine my Winter Sewer Average?

The winter months used to determine your sewer average are those that most households will statistically use less water.



How can I lower my sewer bill during Sewer Winter Quarter Averaging?

Conserving water and completing any needed repairs during the winter quarter averaging period can help lower your sewer charges and save you money.



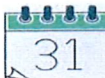
What if I have a leak during those months?

Your sewer rate can be manually recalculated if you submit a request for reconsideration and proof the problem has been corrected. Request forms are available online or in office.



I recently moved to a new home and have no water use history. How will my sewer use be determined?

Accounts without water usage history during the December-February billing periods will be billed based on the city average.



How often does the city review Winter Sewer Averaging?

Your Winter Sewer Average is calculated annually. New averaging costs will be reflected on the April billing for your account.

Utility Billing Department

Payment options are to pay in person, by mail, or by making a payment through nCourt online or by telephone for an additional fee. All payments received prior to 5:00 pm on a business day will be posted the same day.



www.trafficpayment.com
PH: 888-744-0584

You **must** have your account number and amount due to pay.

If you have any questions, please call the Utility Billing Department at 817-255-7900.

Watering restrictions are YEAR-ROUND: No watering between the hours of 10:00 AM to 6:00 PM.

KNOW YOUR WATERING SCHEDULE

MONDAY

No watering with sprinklers or irrigation systems

TUESDAY & FRIDAY

Non-residential sites (apartments, businesses, parks, common areas)

WEDNESDAY & SATURDAY

Residential addresses ending in 0, 2, 4, 6, 8

THURSDAY & SUNDAY

Residential addresses ending in 1, 3, 5, 7, 9

It's easy to join our mailing list!

Just send your email address by text message:

Text

LAKEWORTH

to **22828** to get started.

Message and data rates may apply.



Numbers to Remember



| | |
|--|--------------------|
| City Hall | 817-237-1211 |
| Public Works | 817-237-7210 |
| Library | 817-237-9681 |
| Senior Center | 817-237-3281 |
| Police | 817-237-1224 |
| Property/Evidence | 817-237-1224 x 313 |
| Animal Control | 817-238-8738 |
| Code Compliance | 817-237-1211 x 120 |
| Fire | 817-237-7461 |
| Tarrant Co. Tax | 817-238-4438 |
| (Property Tax & Car Registration) | |
| DPS (Drivers License) | 817-238-9197 |
| County Clerk | 817-238-4420 |
| Health Dept. | 817-238-4441 |
| LW Post Office | 817-237-5128 |
| Waste Connections | 817-222-2221 |

Lake Worth Museum

7001 Charbonneau Rd

Hours:

Thursday – Saturday

10:00 a.m. – 2:00 p.m.

Annual Membership

Dues:

Individual.....\$10

Family.....\$15



City Holiday



Water bill due



Late water bill due



Bulk pick up days



1st day to set out bulk items



Last day to set out Bulk

November '22

| S | M | T | W | T | F | S |
|----|----|----|----|----|----|----|
| | | 1 | 2 | 3 | 4 | 5 |
| 6 | 7 | 8 | 9 | 10 | 11 | 12 |
| 13 | 14 | 15 | 16 | 17 | 18 | 19 |
| 20 | 21 | 22 | 23 | ★ | ★ | 26 |
| 27 | 28 | 29 | 30 | | | |

December '22

| S | M | T | W | T | F | S |
|----|----|----|----|----|----|----|
| | | | | 1 | 2 | 3 |
| 4 | 5 | 6 | 7 | 8 | 9 | 10 |
| 11 | 12 | 13 | 14 | 15 | 16 | 17 |
| 18 | 19 | 20 | 21 | 22 | ★ | 24 |
| 25 | ★ | 27 | 28 | 29 | 30 | 31 |